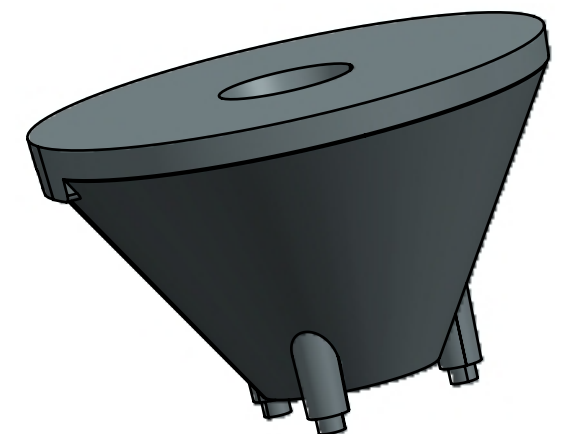

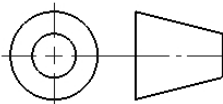


SECTION A-A



- Lens Material : Polycarbonate(Makrolon 2407&2647/Teijin 1225Z)
- Operating Temperature : PC: -40°C~+110°C(Upper Limit +120°C)
- UL Flammability : PC 2407/1225Z: V-2 @0.75mm & HB @2.7mm
- UL RTI Elec : PC 2407/1225Z: 125°C @1.5mm
- Light Transmission Rate 400nm~900nm > 90%

<div></div> <div>BEACON OPTRONICS</div> <div>The Shape of light</div>				<div>Plastic Moulding Genral Tolerances if not otherwise shown According to DIN ISO 2768-1 Linear measures: up to 30mm class M, otherwise class C According to DIN ISO 2768-2</div> <div>Form and position: class L</div>		<div>DO NOT SCALE DRAWING</div>		<div>FIRST ANGLE PROJECTION</div> <div></div>	
				<div>BEACON OPTRONICS</div>					
	NAME	SIGNATURE	DATE	Family Sunbeam Series					
DRAWN	AMIR	AMIR	15-08-25	PRT NO. BO117 - Sunbeam 1x1					
CHKD	YASH	YASH	15-08-25						
APPVD	PRADYUMNA	PRADYUMNA	15-08-25						
MATERIAL	Polycarbonate (Makrolon 2407 , Teijin 1225Z)			DWG NO. BO117					
1:-All Dimensions are in mm 2:-Open Tolerance is +/- 0.2									
This drawing is the property of Beacon Optronics. It may not be reproduced, copied or communicated without a written agreement with Beacon Optronics.									
WEIGHT: 11gm				SCALE 1:1		SHEET 1 OF 1		A3	
								REVISION-00	